

Paul Mason Associates



Beardsley Drive, Chelmsford, CM1 6GQ
Price £239,995

- Double Bedroom FREEHOLD House
- Open Plan Lounge / Kitchen / Dining Room To First Floor
- Modern Fitted Shower Room
- Ground Floor Bedroom
- Entrance Hall
- Garden Plus Allocated Parking
- Close To The New Beaulieu Park Train Station
- Easy Access To A130 and A12, Plus Chelmsford City Centre

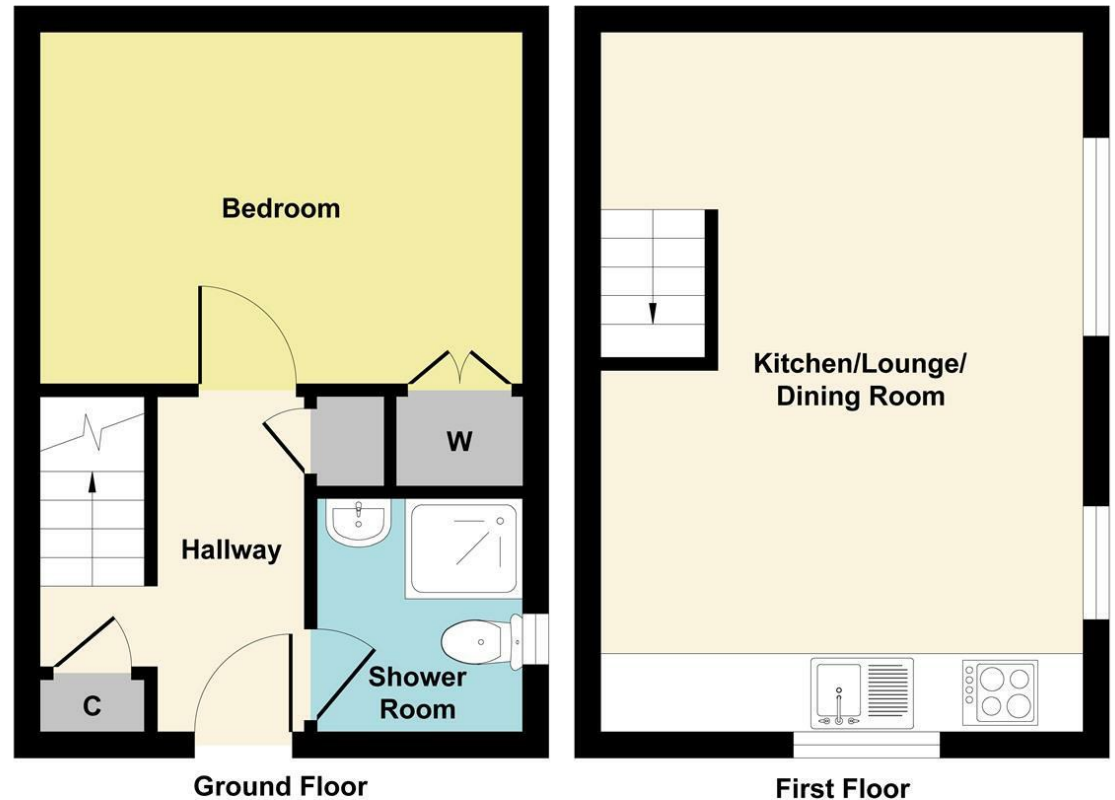
Gary Townsend at Paul Mason Associates offers this recently refurbished one bedroom FREEHOLD property located in the popular area of North Springfield and is offered with VACANT POSSESSION. The property would be an ideal purchase for a First Time Buyer or Investor.

The home provides the ideal opportunity to put your own stamp on the property. There is an entrance hall, fully modernised shower room and double bedroom to the ground floor, plus a light and airy open plan kitchen / dining / lounge on the first floor. Externally, there is a lawn area and private parking space.

Nearby is a Sainsbury's supermarket plus easy access to the A130 and A12 are also offered with Chelmsford City Town and Railway Station around a 10 minute drive. There is also the planned Beaulieu Park Railway Station in close proximity.

Beardsley Drive, Chelmsford, CM1 6GQ

Paul Mason Associates



Energy Efficiency Rating		Environmental Impact (CO ₂) Rating	
Current	Potential	Current	Potential
Very energy efficient - lower running costs		Very environmentally friendly - lower CO ₂ emissions	
(92 plus) A		(92 plus) A	
(81-91) B		(81-91) B	
(69-80) C		(69-80) C	
(55-68) D		(55-68) D	
(39-54) E		(39-54) E	
(21-38) F		(21-38) F	
(1-20) G		(1-20) G	
Not energy efficient - higher running costs		Not environmentally friendly - higher CO ₂ emissions	
	87		
	71		
EU Directive 2002/91/EC		EU Directive 2002/91/EC	
England & Wales		England & Wales	

DISTANCES

Beaulieu Park Station: 1.5 miles

Chelmsford Station: 3.9 miles

A12: 1.3 miles

Stansted Airport: 17.3 miles

(All distances are approximate)

ACCOMMODATION

GROUND FLOOR

Entrance Hall

Stairs to first floor with storage under, storage cupboard, radiator, carpet to floor and textured ceiling.

Double Bedroom

3.67m x 2.77m (12'0" x 9'1")

Window to front, built-in wardrobe with gas fitted boiler, radiator, carpet to floor and textured ceiling.

Bathroom

Opaque window to front, fully tiled, double width shower, LLWC, pedestal wash hand basin, heated towel rail, vinyl flooring sand smooth ceiling.

FIRST FLOOR

Kitchen / Dining / Lounge

4.13m x 3.69m (13'6" x 12'1")

A bright and well-arranged open plan space, thoughtfully designed to combine cooking, dining and

relaxation in one cohesive area. The kitchen is fitted with a range of modern wall and base units, complemented by contrasting work surfaces and tiled splashbacks. Integrated appliances include an oven and hob plus extractor over, along with space for additional appliances. A side-facing window provides natural light over the sink area.

The living and dining space is generously proportioned, enhanced by dual Velux-style roof windows which flood the room with natural light and create an airy feel. The sloping ceilings add character while still allowing for practical furniture placement. A fitted radiator ensures comfort throughout the year, and the layout offers clear zoning for both dining and lounge areas.

Overall, a versatile and inviting space, ideal for modern living and entertaining.

EXTERIOR

Garden & Parking

The front of the property is laid to lawn and leads to an allocated parking

space, plus visitor space. There is also an outside utility shed close to the front door.

Important Notices

We wish to inform all prospective purchasers that we have prepared these particulars including text, photographs and measurements as a general guide. Room sizes should not be relied upon for carpets and furnishings. We have not carried out a survey or tested the services, appliances and specific fittings. These particulars do not form part of a contract and must not be relied upon as statement or representation of fact.

Viewings

Strictly by appointment only through the selling agent Paul Mason Associates 01245 382555.



Paul Mason Associates

35 The Street
Latchingdon
Chelmsford
Essex
CM3 6JP
T: 01621 742 310

Bruce House
17 The Street
Hatfield Peverel
Chelmsford
CM3 2DP
T: 01245 382 555

Sales | Lettings | Development | Investment

F: 01245 381257 E: info@paulmasonassociates.co.uk www.paulmasonassociates.co.uk

Paul Mason Associates Limited Registered in England Number - 6767946
Registered Office - Bruce House, The Street, Hatfield Peverel CM3 2DP

